
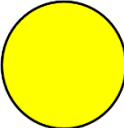
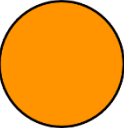
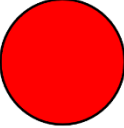
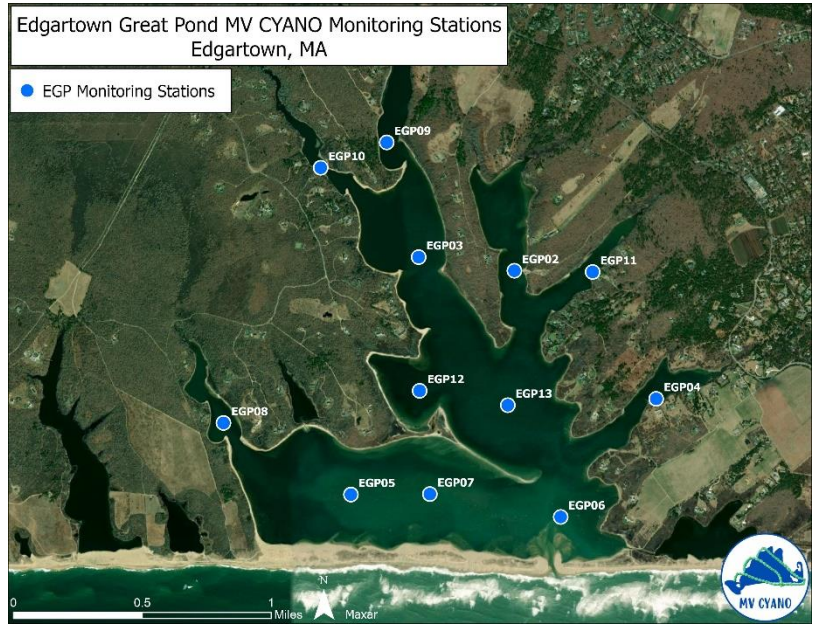


MV CYANO 2022 data for Edgartown Great Pond

Samples collected and analyzed by Great Pond Foundation using a bbe Moldaenke Fluoroprobe II.

For more information, please see www.greatpondfoundation.org/mvcyano

GREEN		<p style="text-align: center;">BLOOM NOT PRESENT</p> <p style="text-align: center;">Conditions are not favorable for a Cyanobacterial Bloom.</p> <p>OK: Swimming, boating, paddling, wading, fishing, and consuming shellfish, crabs, or finfish. No known cyanobacteria risks to humans, pets, and livestock.</p>
YELLOW		<p style="text-align: center;">CYANOBACTERIA ALERT</p> <p style="text-align: center;">It is the season where Cyanobacterial Blooms are possible.</p> <p>OK: Swimming, boating, paddling, wading, fishing, and consuming shellfish, crabs, or finfish.</p> <p>USE CAUTION: risk to humans/pets/ livestock when ingesting water.</p>
ORANGE		<p style="text-align: center;">CYANOBACTERIA BLOOM WATCH</p> <p style="text-align: center;">OK: Boating.</p> <p>USE CAUTION: risk for swimming, paddling, and wading, fishing.</p> <p>ADVISE AGAINST: humans/pets/livestock ingestion of water, consuming shellfish, crabs, or finfish.</p>
RED		<p style="text-align: center;">CYANOBACTERIA BLOOM ADVISORY</p> <p style="text-align: center;">There is an active Cyanobacteria bloom, cyanotoxins may be present.</p> <p style="text-align: center;">OK: Boating.</p> <p>ADVISE AGAINST: pets/livestock/human ingestion of water, fishing, consuming shellfish or finfish, swimming, paddling, and wading.</p>



MV CYANO data are generated from a bbe Moldaenke Fluoroprobe instrument. This instrument is a fluorometer, which measures the biomass (quantity) of microscopic plants by detecting the fluorescence produced in response to different wavelengths of light. The amount of fluorescence is directly related to the concentration of plant pigments in the sample. Different types of microscopic aquatic plants, called phytoplankton, utilize different pigments, which allows the fluorometer to differentiate and quantify different phytoplankton taxa. The Fluoroprobe measures the concentration of cyanobacteria in micrograms per liter ($\mu\text{g/L}$) and estimates the number of cells per milliliter (cells/mL). The MV CYANO color designations are based on the $\mu\text{g/L}$ measurement. The total amount of plant pigments in the water sample corresponds to the amount of chlorophyll, measured in $\mu\text{g/L}$. The concentration of chlorophyll is a measurement of the phytoplankton biomass in the sample. Salinity and water temperature, measured at the time of sample collection, are factors that can influence the growth rate of cyanobacteria and other types of phytoplankton. The MV CYANO color determination (see color-chart above) corresponds to the risk level determined by the local Board of Health agencies based on the concentration of cyanobacteria and other environmental factors.

Station	Pond	Date	Cyanobacteria ($\mu\text{g/L}$)	Cyanobacteria (cells/mL)	Chlorophyll ($\mu\text{g/L}$)	Temp ($^{\circ}\text{C}$)	Temp ($^{\circ}\text{F}$)	Salinity (ppt)	MV CYANO
EGP02	EGP	6/2/22	0.16	163.00	12.82	19.70	67.46	11.44	green
EGP03	EGP	6/2/22	0.00	0.00	10.89	19.70	67.46	11.14	green
EGP04	EGP	6/2/22	0.07	71.00	16.96	19.50	67.10	11.40	green
EGP05	EGP	6/2/22	0.00	0.00	18.03	18.90	66.02	11.83	green
EGP06	EGP	6/2/22	0.00	0.00	17.25	19.30	66.74	11.62	green
EGP07	EGP	6/2/22	0.00	0.00	11.85	18.70	65.66	11.84	green
EGP08	EGP	6/2/22	0.00	0.00	14.54	19.00	66.20	11.36	green
EGP09	EGP	6/2/22	0.00	0.00	15.32	20.00	68.00	10.35	green



Station	Pond	Date	Cyanobacteria (µg/L)	Cyanobacteria (cells/mL)	Chlorophyll (µg/L)	Temp (°C)	Temp (°F)	Salinity (ppt)	MV CYANO
EGP10	EGP	6/2/22	0.30	304.00	8.26	20.50	68.90	11.02	green
EGP11	EGP	6/2/22	0.20	202.00	13.19	19.70	67.46	11.10	green
EGP12	EGP	6/2/22	0.12	124.00	10.18	18.80	65.84	11.55	green
EGP13	EGP	6/2/22	0.00	0.00	14.04	19.50	67.10	11.53	green
EGP02	EGP	6/6/22	0.22	216.00	8.02	19.60	67.28	18.12	green
EGP03	EGP	6/6/22	0.14	140.00	9.97	19.20	66.56	19.82	green
EGP04	EGP	6/6/22	0.23	228.00	7.80	20.00	68.00	11.33	green
EGP05	EGP	6/6/22	0.00	0.00	5.29	19.40	66.92	19.70	green
EGP06	EGP	6/6/22	0.11	112.00	8.48	18.60	65.48	12.69	green
EGP07	EGP	6/6/22	0.00	0.00	7.01	19.20	66.56	22.23	green
EGP08	EGP	6/6/22	0.00	0.00	7.93	19.80	67.64	19.42	green
EGP09	EGP	6/6/22	0.00	0.00	24.14	21.40	70.52	7.94	green
EGP10	EGP	6/6/22	0.39	385.00	9.02	21.60	70.88	12.10	green
EGP11	EGP	6/6/22	0.00	0.00	7.75	19.80	67.64	17.28	green
EGP12	EGP	6/6/22	0.10	95.00	8.05	18.90	66.02	12.22	green
EGP13	EGP	6/6/22	0.00	0.00	7.82	18.90	66.02	11.84	green
EGP02	EGP	6/14/22	0.00	0.00	19.56	23.20	73.76	17.02	green
EGP03	EGP	6/14/22	0.00	0.00	15.68	22.70	72.86	17.65	green
EGP04	EGP	6/14/22	0.00	0.00	13.32	23.90	75.02	16.21	green
EGP05	EGP	6/14/22	0.00	0.00	16.98	22.10	71.78	18.20	green
EGP06	EGP	6/14/22	0.00	0.00	15.84	21.80	71.24	15.18	green
EGP07	EGP	6/14/22	0.00	0.00	16.56	22.20	71.96	17.95	green
EGP08	EGP	6/14/22	0.00	0.00	19.88	22.60	72.68	18.32	green
EGP09	EGP	6/14/22	0.00	0.00	16.52	23.20	73.76	7.90	green
EGP10	EGP	6/14/22	0.00	0.00	21.21	24.10	75.38	14.29	green
EGP11	EGP	6/14/22	0.00	0.00	19.39	23.50	74.30	14.95	green
EGP12	EGP	6/14/22	0.05	49.90	11.73	21.90	71.42	14.36	green
EGP13	EGP	6/14/22	0.00	0.00	14.91	22.40	72.32	14.06	green
EGP02	EGP	6/22/22	1.87	1873.10	16.35	21.20	70.16	16.31	yellow
EGP03	EGP	6/22/22	1.57	1572.10	15.33	21.10	69.98	16.27	yellow
EGP04	EGP	6/22/22	4.46	4456.90	25.14	20.20	68.36	16.43	yellow
EGP05	EGP	6/22/22	1.20	1196.30	22.32	20.00	68.00	17.27	yellow
EGP06	EGP	6/22/22	1.58	1576.30	22.80	20.00	68.00	17.23	yellow
EGP07	EGP	6/22/22	1.34	1341.90	21.96	20.10	68.18	17.23	yellow
EGP08	EGP	6/22/22	1.44	1440.20	21.20	20.90	69.62	16.95	yellow
EGP09	EGP	6/22/22	0.00	0.00	8.45	22.30	72.14	13.78	green
EGP10	EGP	6/22/22	1.07	1070.70	8.99	21.80	71.24	14.18	yellow
EGP11	EGP	6/22/22	2.34	2344.60	18.95	21.00	69.80	16.50	yellow
EGP12	EGP	6/22/22	2.23	2224.10	13.18	20.00	68.00	16.67	yellow
EGP13	EGP	6/22/22	2.04	2041.60	21.82	20.30	68.54	16.67	yellow
EGP02	EGP	6/28/22	3.57	3566.40	18.16	24.10	75.38	16.25	yellow
EGP03	EGP	6/28/22	3.01	3012.40	16.30	23.60	74.48	16.49	yellow



Station	Pond	Date	Cyanobacteria (µg/L)	Cyanobacteria (cells/mL)	Chlorophyll (µg/L)	Temp (°C)	Temp (°F)	Salinity (ppt)	MV CYANO
EGP04	EGP	6/28/22	1.58	1575.40	14.45	23.10	73.58	15.76	yellow
EGP05	EGP	6/28/22	2.28	2276.30	25.27	22.60	72.68	17.11	yellow
EGP06	EGP	6/28/22	2.77	2772.60	17.70	22.40	72.32	16.95	yellow
EGP07	EGP	6/28/22	2.38	2383.60	21.54	22.60	72.68	17.05	yellow
EGP08	EGP	6/28/22	2.89	2885.00	23.57	23.10	73.58	17.08	yellow
EGP09	EGP	6/28/22	0.15	154.50	29.15	25.20	77.36	13.95	green
EGP10	EGP	6/28/22	1.07	1068.10	10.00	25.10	77.18	16.29	yellow
EGP11	EGP	6/28/22	3.43	3429.80	14.10	23.20	73.76	15.24	yellow
EGP12	EGP	6/28/22	3.73	3725.30	14.43	22.70	72.86	16.39	yellow
EGP13	EGP	6/28/22	2.79	2786.60	14.45	23.00	73.40	16.23	yellow
EGP02	EGP	7/7/22	5.42	5419.90	16.85	24.00	75.20	15.88	yellow
EGP03	EGP	7/7/22	3.68	3681.10	17.08	23.60	74.48	15.92	yellow
EGP04	EGP	7/7/22	7.00	7002.50	19.52	23.60	74.48	15.90	yellow
EGP05	EGP	7/7/22	4.25	4249.10	27.90	23.10	73.58	16.75	yellow
EGP06	EGP	7/7/22	3.39	3390.80	16.20	23.20	73.76	16.53	yellow
EGP07	EGP	7/7/22	3.86	3857.40	25.32	23.00	73.40	16.62	yellow
EGP08	EGP	7/7/22	6.20	6198.80	33.37	23.30	73.94	16.62	yellow
EGP09	EGP	7/7/22	0.84	834.70	23.94	24.90	76.82	14.82	yellow
EGP10	EGP	7/7/22	3.45	3445.80	16.81	24.20	75.56	15.59	yellow
EGP11	EGP	7/7/22	4.36	4360.50	16.25	23.20	73.76	15.62	yellow
EGP12	EGP	7/7/22	2.31	2314.90	13.72	23.50	74.30	15.30	yellow
EGP13	EGP	7/7/22	3.69	3684.00	18.64	23.70	74.66	15.80	yellow
EGP02	EGP	7/11/22	4.18	4174.90	17.43	24.70	76.46	15.83	yellow
EGP03	EGP	7/11/22	3.55	3545.00	17.75	24.70	76.46	15.38	yellow
EGP04	EGP	7/11/22	6.95	6944.90	26.38	24.20	75.56	16.05	yellow
EGP05	EGP	7/11/22	2.11	2108.80	20.18	24.20	75.56	16.66	yellow
EGP06	EGP	7/11/22	2.34	2343.00	16.26	23.50	74.30	16.41	yellow
EGP07	EGP	7/11/22	1.94	1939.30	16.66	23.80	74.84	16.57	yellow
EGP08	EGP	7/11/22	2.59	2591.40	22.63	24.90	76.82	16.62	yellow
EGP09	EGP	7/11/22	4.45	4447.90	28.15	24.40	75.92	13.95	yellow
EGP10	EGP	7/11/22	3.69	3688.90	14.22	25.50	77.90	15.44	yellow
EGP11	EGP	7/11/22	3.91	3914.20	16.46	23.80	74.84	15.40	yellow
EGP12	EGP	7/11/22	3.30	3302.20	15.39	24.30	75.74	15.74	yellow
EGP13	EGP	7/11/22	3.44	3442.30	15.55	24.30	75.74	15.85	yellow
EGP02	EGP	7/18/22	11.72	11717.30	38.65	27.10	80.78	15.63	orange
EGP03	EGP	7/18/22	6.13	6132.70	28.04	26.90	80.42	15.56	yellow
EGP04	EGP	7/18/22	12.49	12491.50	54.24	27.00	80.60	15.91	orange
EGP05	EGP	7/18/22	5.84	5842.90	46.24	26.30	79.34	16.63	yellow
EGP06	EGP	7/18/22	8.82	8815.00	48.52	26.20	79.16	16.39	yellow
EGP07	EGP	7/18/22	5.31	5313.60	45.78	26.40	79.52	16.58	yellow
EGP08	EGP	7/18/22	6.11	6112.20	54.73	26.70	80.06	16.62	yellow
EGP09	EGP	7/18/22	14.16	14160.30	44.22	27.70	81.86	13.58	orange



Station	Pond	Date	Cyanobacteria (µg/L)	Cyanobacteria (cells/mL)	Chlorophyll (µg/L)	Temp (°C)	Temp (°F)	Salinity (ppt)	MV CYANO
EGP10	EGP	7/18/22	7.72	7718.00	25.71	28.60	83.48	15.27	yellow
EGP11	EGP	7/18/22	14.01	14012.00	41.91	27.20	80.96	15.32	orange
EGP12	EGP	7/18/22	13.74	13739.10	42.59	25.90	78.62	15.86	orange
EGP13	EGP	7/18/22	10.80	10796.60	38.57	26.50	79.70	15.81	orange
EGP02	EGP	7/22/22	9.50	9498.80	100.05	26.90	80.42	15.63	yellow
EGP03	EGP	7/22/22	3.88	3877.60	76.60	26.60	79.88	15.84	yellow
EGP04	EGP	7/22/22	13.55	13553.10	130.07	26.80	80.24	15.44	yellow
EGP05	EGP	7/22/22	4.41	4412.50	97.91	26.20	79.16	16.65	yellow
EGP06	EGP	7/22/22	7.84	7840.80	100.88	26.10	78.98	16.41	yellow
EGP07	EGP	7/22/22	5.83	5832.18	100.88	26.20	79.16	16.59	yellow
EGP08	EGP	7/22/22	1.57	1565.80	103.02	26.30	79.34	16.61	yellow
EGP09	EGP	7/22/22	15.16	15158.70	107.37	27.30	81.14	13.27	yellow
EGP10	EGP	7/22/22	2.30	2301.60	63.15	27.80	82.04	15.16	yellow
EGP11	EGP	7/22/22	13.82	13818.10	94.66	27.00	80.60	15.18	yellow
EGP12	EGP	7/22/22	7.46	7462.50	87.73	26.10	78.98	15.91	yellow
EGP13	EGP	7/22/22	5.80	5801.36	85.81	26.20	79.16	15.87	yellow
EGP02	EGP	7/27/22	4.95	4947.50	204.43	26.40	79.52	15.73	yellow
EGP03	EGP	7/27/22	0.00	0.00	188.31	26.50	79.70	15.77	green
EGP04	EGP	7/27/22	7.86	7861.00	210.89	25.80	78.44	15.20	yellow
EGP05	EGP	7/27/22	5.59	5594.91	180.03	25.70	78.26	16.64	yellow
EGP06	EGP	7/27/22	4.91	4906.18	179.78	25.20	77.36	15.95	yellow
EGP07	EGP	7/27/22	6.90	6901.50	169.52	25.50	77.90	16.62	yellow
EGP08	EGP	7/27/22	11.14	11136.20	183.02	25.80	78.44	16.49	orange
EGP09	EGP	7/27/22	3.69	3694.20	198.03	27.60	81.68	14.07	yellow
EGP10	EGP	7/27/22	2.51	2507.10	141.52	26.80	80.24	15.93	yellow
EGP11	EGP	7/27/22	4.77	4770.30	143.81	25.50	77.90	14.67	yellow
EGP12	EGP	7/27/22	2.04	2042.00	178.25	25.70	78.26	15.26	yellow
EGP13	EGP	7/27/22	4.25	4247.90	170.08	26.00	78.80	15.62	yellow
EGP02	EGP	7/29/22	4.05	4049.60	161.07	27.10	80.78	15.56	yellow
EGP03	EGP	7/29/22	1.56	1554.90	156.61	27.20	80.96	15.51	yellow
EGP04	EGP	7/29/22	4.68	4677.90	182.60	27.20	80.96	15.30	yellow
EGP05	EGP	7/29/22	0.01	10.70	173.19	26.50	79.70	16.66	green
EGP06	EGP	7/29/22	5.92	5916.00	167.05	26.10	78.98	16.03	yellow
EGP07	EGP	7/29/22	0.00	0.00	165.07	26.50	79.70	16.64	green
EGP08	EGP	7/29/22	1.84	1837.70	176.35	26.60	79.88	16.64	yellow
EGP09	EGP	7/29/22	4.66	4664.30	166.33	27.70	81.86	13.83	yellow
EGP10	EGP	7/29/22	1.20	1198.30	110.21	27.60	81.68	15.51	yellow
EGP11	EGP	7/29/22	8.48	8475.40	148.57	27.20	80.96	15.30	yellow
EGP12	EGP	7/29/22	4.12	4123.60	161.72	26.40	79.52	15.68	yellow
EGP13	EGP	7/29/22	2.01	2009.50	171.19	26.50	79.70	15.73	yellow
EGP02	EGP	8/2/22	7.61	7608.00	187.09	25.40	77.72	15.43	yellow
EGP03	EGP	8/2/22	0.00	0.00	191.49	25.90	78.62	15.24	green



Station	Pond	Date	Cyanobacteria (µg/L)	Cyanobacteria (cells/mL)	Chlorophyll (µg/L)	Temp (°C)	Temp (°F)	Salinity (ppt)	MV CYANO
EGP04	EGP	8/2/22	9.60	9600.20	171.12	25.40	77.72	15.74	yellow
EGP05	EGP	8/2/22	6.84	6841.40	178.54	25.00	77.00	16.56	yellow
EGP06	EGP	8/2/22	5.51	5514.10	176.81	24.70	76.46	15.89	yellow
EGP07	EGP	8/2/22	6.07	6067.60	168.62	24.90	76.82	16.49	yellow
EGP08	EGP	8/2/22	2.72	2723.80	181.97	25.40	77.72	16.54	yellow
EGP09	EGP	8/2/22	0.00	0.00	228.40	27.10	80.78	14.61	green
EGP10	EGP	8/2/22	0.00	0.00	170.53	26.60	79.88	15.41	green
EGP11	EGP	8/2/22	6.90	6897.70	169.47	25.30	77.54	15.49	yellow
EGP12	EGP	8/2/22	4.51	4506.20	183.50	25.00	77.00	15.62	yellow
EGP13	EGP	8/2/22	4.45	4445.80	179.99	25.40	77.72	15.52	yellow
EGP02	EGP	8/4/22	0.00	0.00	197.60	27.30	81.14	15.52	green
EGP03	EGP	8/4/22	0.00	0.00	211.44	27.20	80.96	15.41	green
EGP04	EGP	8/4/22	0.00	0.00	204.91	27.20	80.96	15.73	green
EGP05	EGP	8/4/22	0.00	0.00	183.90	26.80	80.24	16.53	green
EGP06	EGP	8/4/22	0.00	0.00	192.19	26.30	79.34	16.23	green
EGP07	EGP	8/4/22	0.00	0.00	182.99	26.70	80.06	16.45	green
EGP08	EGP	8/4/22	0.00	0.00	155.90	27.20	80.96	16.22	green
EGP09	EGP	8/4/22	0.00	0.00	177.25	27.90	82.22	14.37	green
EGP10	EGP	8/4/22	0.00	0.00	176.46	28.20	82.76	14.82	green
EGP11	EGP	8/4/22	2.90	2900.10	182.53	27.50	81.50	15.42	yellow
EGP12	EGP	8/4/22	0.94	943.60	178.93	26.70	80.06	15.56	yellow
EGP13	EGP	8/4/22	0.15	146.80	177.61	26.70	80.06	15.66	green
EGP02	EGP	8/8/22	9.13	9128.50	165.95	27.70	81.86	15.53	yellow
EGP03	EGP	8/8/22	5.39	5389.36	175.73	27.70	81.86	15.42	yellow
EGP04	EGP	8/8/22	12.98	12981.18	176.02	26.80	80.24	15.34	yellow
EGP05	EGP	8/8/22	10.62	10620.55	162.73	26.70	80.06	16.42	yellow
EGP06	EGP	8/8/22	12.19	12186.50	163.44	26.30	79.34	16.37	yellow
EGP09	EGP	8/8/22	10.67	10668.36	163.82	27.80	82.04	13.64	yellow
EGP10	EGP	8/8/22	6.10	6098.00	170.34	28.10	82.58	15.53	yellow
EGP02	EGP	8/10/22	14.38	14380.00	154.94	27.30	81.14	15.50	yellow
EGP03	EGP	8/10/22	7.36	7358.40	163.09	27.40	81.32	15.40	yellow
EGP04	EGP	8/10/22	12.38	12382.50	167.74	27.00	80.60	15.27	yellow
EGP05	EGP	8/10/22	7.28	7277.40	158.35	26.70	80.06	16.48	yellow
EGP06	EGP	8/10/22	9.83	9829.80	163.98	26.70	80.06	16.37	yellow
EGP07	EGP	8/10/22	7.29	7292.20	155.97	26.70	80.06	16.48	yellow
EGP08	EGP	8/10/22	11.19	11185.90	161.33	27.00	80.60	16.28	yellow
EGP09	EGP	8/10/22	10.75	10751.90	110.83	27.30	81.14	11.93	yellow
EGP10	EGP	8/10/22	11.16	11158.70	132.89	27.10	80.78	14.26	yellow
EGP11	EGP	8/10/22	11.45	11447.80	168.28	27.30	81.14	15.49	yellow
EGP12	EGP	8/10/22	9.18	9181.20	158.23	27.00	80.60	15.47	yellow
EGP13	EGP	8/10/22	6.49	6484.70	169.19	27.20	80.96	15.80	yellow



Station	Pond	Date	Cyanobacteria (µg/L)	Cyanobacteria (cells/mL)	Chlorophyll (µg/L)	Temp (°C)	Temp (°F)	Salinity (ppt)	MV CYANO
EGP02	EGP	8/15/22	0.00	0.00	154.31	25.00	77.00	15.59	green
EGP03	EGP	8/15/22	1.89	1888.80	148.70	24.90	76.82	15.37	yellow
EGP04	EGP	8/15/22	0.00	0.00	172.45	25.10	77.18	15.74	green
EGP05	EGP	8/15/22	0.00	0.00	162.06	24.60	76.28	16.31	green
EGP06	EGP	8/15/22	0.00	0.00	159.64	24.60	76.28	16.04	green
EGP08	EGP	8/15/22	0.00	0.00	172.59	25.00	77.00	16.01	green
EGP09	EGP	8/15/22	0.30	296.40	141.44	24.90	76.82	14.04	green
EGP10	EGP	8/15/22	0.33	326.90	154.30	25.80	78.44	14.55	green
EGP02	EGP	8/18/22	1.94	1936.80	133.02	22.40	72.32	15.63	yellow
EGP03	EGP	8/18/22	1.62	1621.90	129.15	22.40	72.32	15.38	yellow
EGP04	EGP	8/18/22	2.64	2641.50	154.60	22.00	71.60	15.81	yellow
EGP05	EGP	8/18/22	0.00	0.00	143.26	21.70	71.06	16.22	green
EGP06	EGP	8/18/22	0.67	666.10	141.24	21.40	70.52	16.04	yellow
EGP07	EGP	8/18/22	0.02	16.30	141.50	21.50	70.70	16.17	green
EGP08	EGP	8/18/22	0.04	35.40	143.48	22.00	71.60	16.06	green
EGP09	EGP	8/18/22	0.00	0.00	133.03	22.40	72.32	14.18	green
EGP10	EGP	8/18/22	0.74	735.10	131.58	22.00	71.60	14.34	yellow
EGP11	EGP	8/18/22	2.89	2893.20	140.52	21.90	71.42	15.47	yellow
EGP12	EGP	8/18/22	0.99	988.10	133.65	22.20	71.96	15.55	yellow
EGP13	EGP	8/18/22	1.38	1380.30	135.07	22.10	71.78	15.71	yellow
EGP02	EGP	8/24/22	2.07	2070.10	134.36	25.2	77.36	15.44	yellow
EGP03	EGP	8/24/22	1.86	1864.40	130.85	25.4	77.72	15.01	yellow
EGP04	EGP	8/24/22	2.02	22.90	189.82	24.9	76.82	15.69	yellow
EGP05	EGP	8/24/22	1.21	1206.00	161.23	24.6	76.28	16.2	yellow
EGP06	EGP	8/24/22	4.38	4375.90	176.05	24.1	75.38	16.08	yellow
EGP07	EGP	8/24/22	6.68	6677.20	178.69	24.3	75.74	16.1	yellow
EGP08	EGP	8/24/22	0.04	39.60	142.21	25.1	77.18	16.15	green
EGP09	EGP	8/24/22	2.91	2906.80	121.58	25.5	77.90	13.57	yellow
EGP10	EGP	8/24/22	1.26	1260.90	70.65	26.1	78.98	15.28	yellow
EGP11	EGP	8/24/22	2.63	2630.00	146.62	25.4	77.72	15.36	yellow
EGP12	EGP	8/24/22	4.22	4221.30	162.47	24.7	76.46	15.61	yellow
EGP13	EGP	8/24/22	6.15	6150.80	166.73	24.4	75.92	15.74	yellow
EGP02	EGP	8/26/22	0.17	173.40	122.74	26.6	79.88	15.24	green
EGP03	EGP	8/26/22	0.00	0.00	131.69	26.3	79.34	15.47	green
EGP04	EGP	8/26/22	1.72	1719.50	149.79	26.5	79.70	15.56	yellow
EGP05	EGP	8/26/22	0.09	92.50	153.10	25.7	78.26	16.2	green
EGP06	EGP	8/26/22	4.74	4737.50	155.20	25.6	78.08	15.95	yellow
EGP07	EGP	8/26/22	0.00	0.00	146.42	26.2	79.16	16.2	green
EGP08	EGP	8/26/22	0.18	176.00	144.22	26.5	79.70	16	green
EGP09	EGP	8/26/22	3.31	3310.70	102.56	27.5	81.50	13.68	yellow
EGP10	EGP	8/26/22	0.64	638.80	121.17	27.4	81.32	14.64	yellow
EGP11	EGP	8/26/22	2.40	2401.60	120.63	26.9	80.42	15.03	yellow



Station	Pond	Date	Cyanobacteria (µg/L)	Cyanobacteria (cells/mL)	Chlorophyll (µg/L)	Temp (°C)	Temp (°F)	Salinity (ppt)	MV CYANO
EGP12	EGP	8/26/22	0.51	513.20	148.48	25.7	78.26	15.57	yellow
EGP13	EGP	8/26/22	0.00	0.00	144.16	26	78.80	15.68	green
EGP02	EGP	8/30/22	3.23	3231.64	122.01	25.8	78.44	15.37	yellow
EGP03	EGP	8/30/22	2.89	2888.60	113.56	26.7	80.06	14.97	yellow
EGP04	EGP	8/30/22	4.17	4174.73	124.67	25.6	78.08	15.52	yellow
EGP05	EGP	8/30/22	1.39	1386.36	124.84	25.2	77.36	16.04	yellow
EGP06	EGP	8/30/22	5.20	5198.00	133.63	25.1	77.18	15.8	yellow
EGP07	EGP	8/30/22	4.24	4239.60	118.03	25	77.00	16.01	yellow
EGP08	EGP	8/30/22	2.01	2011.00	119.58	25.2	77.36	15.68	yellow
EGP09	EGP	8/30/22	4.71	4707.40	106.21	26.1	78.98	13.73	yellow
EGP10	EGP	8/30/22	2.47	2467.36	94.05	26.8	80.24	14.14	yellow
EGP11	EGP	8/30/22	4.31	4306.40	112.50	25.6	78.08	15.24	yellow
EGP12	EGP	8/30/22	8.52	8515.92	125.21	25	77.00	15.38	yellow
EGP13	EGP	8/30/22	5.36	5363.60	116.80	25.5	77.90	15.45	yellow
EGP02	EGP	9/1/22	2.69	2694.20	94.92	25.80	78.44	15.19	yellow
EGP03	EGP	9/1/22	4.26	4257.27	105.49	25.40	77.72	14.96	yellow
EGP07	EGP	9/1/22	4.84	4835.73	105.55	24.90	76.82	15.98	yellow
EGP08	EGP	9/1/22	5.46	5462.64	119.70	25.20	77.36	15.85	yellow
EGP09	EGP	9/1/22	3.43	3427.00	89.17	26.70	80.06	13.3	yellow
EGP12	EGP	9/1/22	5.93	5934.25	107.67	25.20	77.36	15.22	yellow
EGP13	EGP	9/1/22	4.87	4873.70	100.21	25.30	77.54	15.38	yellow
EGP02	EGP	9/8/22	21.60	21598.80	116.68	21.8	69.26	15.35	orange
EGP03	EGP	9/8/22	23.87	23869.80	113.85	21.9	71.42	15.02	orange
EGP04	EGP	9/8/22	23.04	23044.80	132.42	21.1	69.98	15.62	orange
EGP05	EGP	9/8/22	15.44	15443.30	114.62	20.7	69.26	16.01	orange
EGP06	EGP	9/8/22	18.37	18370.20	117.01	20.9	69.62	15.9	orange
EGP07	EGP	9/8/22	15.35	15349.70	115.17	20.9	69.62	16.01	orange
EGP08	EGP	9/8/22	15.36	15358.00	114.29	21.2	70.16	15.83	orange
EGP09	EGP	9/8/22	25.79	25789.10	123.17	21.6	70.88	13.94	orange
EGP10	EGP	9/8/22	21.78	21784.00	114.38	22.3	72.14	14.27	orange
EGP11	EGP	9/8/22	24.37	24370.20	121.71	21.1	69.98	15.19	orange
EGP12	EGP	9/8/22	20.49	20491.50	111.18	21.4	70.52	14.93	orange
EGP13	EGP	9/8/22	20.75	20748.20	112.27	21.3	70.34	15.32	orange
EGP02	EGP	9/12/22	12.66	12658.50	97.64	22.6	72.68	14.98	orange
EGP03	EGP	9/12/22	17.07	17066.36	102.74	22.4	72.32	15.2	orange
EGP04	EGP	9/12/22	14.09	14092.00	97.57	22.7	72.86	15.16	orange
EGP05	EGP	9/12/22	17.36	17356.27	99.34	22	71.60	16.07	orange
EGP06	EGP	9/12/22	13.14	13139.80	93.04	22.2	71.96	15.73	orange
EGP07	EGP	9/12/22	15.53	15532.64	98.41	22.1	71.78	16.09	orange
EGP08	EGP	9/12/22	23.62	23615.70	113.01	21.8	71.24	15.88	orange
EGP09	EGP	9/12/22	17.51	17509.55	110.58	23.4	74.12	14.55	orange
EGP10	EGP	9/12/22	19.65	19652.45	116.23	22.3	72.14	14.59	orange



Station	Pond	Date	Cyanobacteria (µg/L)	Cyanobacteria (cells/mL)	Chlorophyll (µg/L)	Temp (°C)	Temp (°F)	Salinity (ppt)	MV CYANO
EGP11	EGP	9/12/22	12.21	12214.33	102.44	22.8	73.04	15.18	orange
EGP12	EGP	9/12/22	12.67	12674.36	89.51	21.9	71.42	14.99	orange
EGP13	EGP	9/12/22	14.73	14724.80	93.30	22.4	72.32	15.27	orange
EGP02	EGP	9/16/22	15.68	15679.10	101.76	20.6	69.08	14.89	orange
EGP03	EGP	9/16/22	17.10	17102.50	108.14	21	69.80	14.82	orange
EGP04	EGP	9/16/22	13.53	13532.40	103.14	20.9	69.62	15.04	orange
EGP05	EGP	9/16/22	12.88	12877.60	99.28	20.5	68.90	15.65	orange
EGP06	EGP	9/16/22	13.37	13365.10	95.53	19.8	67.64	15.18	orange
EGP07	EGP	9/16/22	13.17	13171.00	93.22	20.2	68.36	15.6	orange
EGP08	EGP	9/16/22	16.23	16229.60	101.29	20.3	68.54	15.54	orange
EGP09	EGP	9/16/22	9.67	9671.30	106.63	20.9	69.62	13.89	yellow
EGP10	EGP	9/16/22	20.39	20394.30	118.51	19.4	66.92	13.88	orange
EGP11	EGP	9/16/22	16.08	16073.80	113.61	20.8	69.44	14.67	orange
EGP12	EGP	9/16/22	14.68	14683.80	101.92	20.2	68.36	14.9	orange
EGP13	EGP	9/16/22	13.92	13922.20	97.54	20.8	69.44	14.95	orange
EGP02	EGP	9/21/22	17.87	17867.20	78.79	20.8	69.44	14.95	yellow
EGP03	EGP	9/21/22	18.41	18405.30	76.22	20.9	69.62	14.73	yellow
EGP04	EGP	9/21/22	25.75	25751.60	91.20	20.3	68.54	15	yellow
EGP05	EGP	9/21/22	12.91	12908.30	65.28	20.8	69.44	15.49	yellow
EGP06	EGP	9/21/22	17.50	17505.30	70.12	20.5	68.90	15.29	yellow
EGP07	EGP	9/21/22	14.64	14642.80	69.83	20.7	69.26	15.52	yellow
EGP08	EGP	9/21/22	15.84	15841.20	77.75	20.9	69.62	15.42	yellow
EGP09	EGP	9/21/22	18.98	18975.50	80.20	20.7	69.26	13.37	yellow
EGP10	EGP	9/21/22	17.51	17510.50	75.50	20.9	69.62	14.09	yellow
EGP11	EGP	9/21/22	25.29	25293.40	89.48	20.2	68.36	14.73	yellow
EGP12	EGP	9/21/22	16.31	16314.40	72.66	20.7	69.26	14.7	yellow
EGP13	EGP	9/21/22	15.20	15196.80	62.95	20.9	69.62	14.95	yellow
EGP02	EGP	9/28/22	6.23	6232.60	51.09	18.5	65.30	14.86	yellow
EGP03	EGP	9/28/22	13.58	13580.40	69.91	18.7	65.66	14.45	yellow
EGP04	EGP	9/28/22	11.73	11732.90	64.01	19.2	66.56	14.73	yellow
EGP05	EGP	9/28/22	13.19	13185.30	62.12	18.4	65.12	15.25	yellow
EGP06	EGP	9/28/22	14.00	14003.70	63.92	18.3	64.94	15.25	yellow
EGP07	EGP	9/28/22	12.59	12589.80	60.23	18.2	64.76	15.24	yellow
EGP08	EGP	9/28/22	12.18	12175.90	61.70	18.7	65.66	15.11	yellow
EGP09	EGP	9/28/22	4.50	4497.00	70.30	19	66.20	13.63	yellow
EGP10	EGP	9/28/22	7.75	7753.90	56.63	18.8	65.84	14.45	yellow
EGP11	EGP	9/28/22	7.95	7950.20	59.35	19	66.20	14.5	yellow
EGP12	EGP	9/28/22	9.79	9787.10	64.83	18.1	64.58	14.65	yellow
EGP13	EGP	9/28/22	11.17	11173.50	63.90	18.2	64.76	14.68	yellow
EGP02	EGP	10/6/22	18.83	18826.50	79.36	14.4	57.92	14.08	yellow
EGP03	EGP	10/6/22	19.49	19484.70	74.03	14.1	57.38	14.09	yellow
EGP04	EGP	10/6/22	18.29	18288.20	77.85	14.4	57.92	14.21	yellow



Station	Pond	Date	Cyanobacteria (µg/L)	Cyanobacteria (cells/mL)	Chlorophyll (µg/L)	Temp (°C)	Temp (°F)	Salinity (ppt)	MV CYANO
EGP05	EGP	10/6/22	20.15	20147.80	79.71	14.2	57.56	14.39	yellow
EGP06	EGP	10/6/22	19.53	19532.50	75.64	14.3	57.74	14.49	yellow
EGP07	EGP	10/6/22	21.30	21298.10	82.46	14.1	57.38	14.45	yellow
EGP08	EGP	10/6/22	18.43	18424.70	75.86	14.2	57.56	14.3	yellow
EGP09	EGP	10/6/22	17.86	17856.60	76.21	14.3	57.74	13.08	yellow
EGP10	EGP	10/6/22	18.05	18048.70	72.32	14.1	57.38	13.78	yellow
EGP11	EGP	10/6/22	17.37	17371.20	77.11	14.6	58.28	13.97	yellow
EGP12	EGP	10/6/22	18.12	18126.60	72.04	14.4	57.92	13.92	yellow
EGP13	EGP	10/6/22	19.93	19929.10	75.73	14.2	57.56	14.2	yellow
EGP02	EGP	10/11/22	6.07	6070.70	55.27	14.8	58.64	14.04	yellow
EGP03	EGP	10/11/22	6.59	6595.00	57.78	14.7	58.46	13.81	yellow
EGP04	EGP	10/11/22	6.43	6428.20	57.76	14.8	58.64	13.95	yellow
EGP05	EGP	10/11/22	7.10	7097.80	52.92	14.6	58.28	14.33	yellow
EGP06	EGP	10/11/22	7.45	7449.90	54.74	14.2	57.56	14.25	yellow
EGP07	EGP	10/11/22	7.09	7093.78	52.79	14.5	58.10	14.33	yellow
EGP08	EGP	10/11/22	7.06	7059.80	55.41	14.4	57.92	14.21	yellow
EGP09	EGP	10/11/22	4.02	4019.70	61.15	14.8	58.64	12.81	yellow
EGP10	EGP	10/11/22	6.31	6308.60	55.86	15.3	59.54	13.67	yellow
EGP11	EGP	10/11/22	6.74	6735.80	54.03	15	59.00	14.07	yellow
EGP12	EGP	10/11/22	7.71	7705.00	57.64	14.4	57.92	13.98	yellow
EGP13	EGP	10/11/22	7.06	7063.10	54.53	14.5	58.10	14.12	yellow
EGP02	EGP	10/27/22	4.98	4978.60	60.92	16.9	62.42	13.07	yellow
EGP03	EGP	10/27/22	4.00	4003.70	59.70	16.7	62.06	13.07	yellow
EGP04	EGP	10/27/22	6.54	6542.50	64.63	16.8	62.24	13.2	yellow
EGP05	EGP	10/27/22	5.99	5987.30	58.70	16.9	62.42	13.27	yellow
EGP06	EGP	10/27/22	6.94	6937.70	57.96	16.8	62.24	13.28	yellow
EGP07	EGP	10/27/22	6.46	6459.90	60.64	17	62.60	13.25	yellow
EGP08	EGP	10/27/22	4.07	4071.60	56.92	16.7	62.06	13.33	yellow
EGP09	EGP	10/27/22	4.42	4418.10	65.79	17.2	62.96	12.27	yellow
EGP10	EGP	10/27/22	4.71	4706.80	59.56	16.9	62.42	12.54	yellow
EGP11	EGP	10/27/22	5.80	5799.20	60.13	16.9	62.42	13	yellow
EGP12	EGP	10/27/22	6.34	6344.40	65.20	16.4	61.52	13.2	yellow
EGP13	EGP	10/27/22	5.39	5387.40	67.15	16.8	62.24	13.2	yellow
EGP02	EGP	10/19/22	6.54	6545.50	56.56	16.3	61.34	13.33	yellow
EGP03	EGP	10/19/22	6.84	6843.10	62.63	16.5	61.70	13.35	yellow
EGP04	EGP	10/19/22	9.06	9061.70	56.78	16.2	61.16	13.35	yellow
EGP05	EGP	10/19/22	8.54	8543.60	52.48	15.8	60.44	13.7	yellow
EGP06	EGP	10/19/22	9.23	9232.90	53.79	15	59.00	13.75	yellow
EGP07	EGP	10/19/22	9.97	9971.50	54.61	15.5	59.90	13.74	yellow
EGP08	EGP	10/19/22	6.94	6944.40	56.54	16	60.80	13.54	yellow
EGP09	EGP	10/19/22	5.10	5095.10	56.71	17.1	62.78	12.99	yellow
EGP10	EGP	10/19/22	5.05	5049.00	47.77	17.1	62.78	13.43	yellow



Station	Pond	Date	Cyanobacteria (µg/L)	Cyanobacteria (cells/mL)	Chlorophyll (µg/L)	Temp (°C)	Temp (°F)	Salinity (ppt)	MV CYANO
EGP11	EGP	10/19/22	6.77	6772.00	57.77	15.8	60.44	13.12	yellow
EGP12	EGP	10/19/22	8.20	8195.90	60.36	15.9	60.62	13.49	yellow
EGP13	EGP	10/19/22	9.83	9825.60	62.04	15.8	60.44	13.6	yellow
EGP02	EGP	11/3/22	5.51	5505.60	65.45	14.3	57.74	12.9	yellow
EGP04	EGP	11/3/22	6.93	6932.50	67.40	14.6	58.28	12.9	yellow
EGP05	EGP	11/3/22	4.97	4974.10	64.26	14	57.20	13.12	yellow
EGP09	EGP	11/3/22	5.65	5654.30	71.25	13.6	56.48	12.26	yellow
EGP13	EGP	11/3/22	6.29	6289.50	60.90	14.3	57.74	12.98	yellow

