
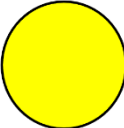
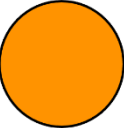
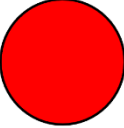
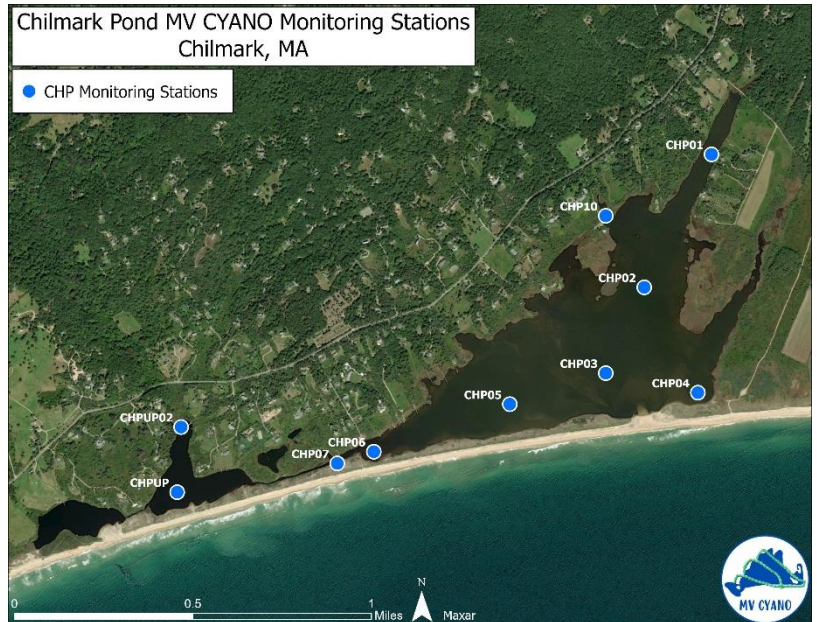


MV CYANO 2022 data for Chilmark Pond

Samples collected and analyzed by Great Pond Foundation using a bbe Moldaenke Fluoroprobe II.

For more information, please see www.greatpondfoundation.org/mvcyano

GREEN		<p style="text-align: center;">BLOOM NOT PRESENT</p> <p style="text-align: center;">Conditions are not favorable for a Cyanobacterial Bloom.</p> <p>OK: Swimming, boating, paddling, wading, fishing, and consuming shellfish, crabs, or finfish. No known cyanobacteria risks to humans, pets, and livestock.</p>
YELLOW		<p style="text-align: center;">CYANOBACTERIA ALERT</p> <p style="text-align: center;">It is the season where Cyanobacterial Blooms are possible.</p> <p>OK: Swimming, boating, paddling, wading, fishing, and consuming shellfish, crabs, or finfish.</p> <p>USE CAUTION: risk to humans/pets/ livestock when ingesting water.</p>
ORANGE		<p style="text-align: center;">CYANOBACTERIA BLOOM WATCH</p> <p style="text-align: center;">OK: Boating.</p> <p>USE CAUTION: risk for swimming, paddling, and wading, fishing.</p> <p>ADVISE AGAINST: humans/pets/livestock ingestion of water, consuming shellfish, crabs, or finfish.</p>
RED		<p style="text-align: center;">CYANOBACTERIA BLOOM ADVISORY</p> <p style="text-align: center;">There is an active Cyanobacteria bloom, cyanotoxins may be present.</p> <p style="text-align: center;">OK: Boating.</p> <p>ADVISE AGAINST: pets/livestock/human ingestion of water, fishing, consuming shellfish or finfish, swimming, paddling, and wading.</p>



MV CYANO data are generated from a bbe Moldaenke Fluoroprobe instrument. This instrument is a fluorometer, which measures the biomass (quantity) of microscopic plants by detecting the fluorescence produced in response to different wavelengths of light. The amount of fluorescence is directly related to the concentration of plant pigments in the sample. Different types of microscopic aquatic plants, called phytoplankton, utilize different pigments, which allows the fluorometer to differentiate and quantify different phytoplankton taxa. The Fluoroprobe measures the concentration of cyanobacteria in micrograms per liter ($\mu\text{g/L}$) and estimates the number of cells per milliliter (cells/mL). The MV CYANO color designations are based on the $\mu\text{g/L}$ measurement. The total amount of plant pigments in the water sample corresponds to the amount of chlorophyll, measured in $\mu\text{g/L}$. The concentration of chlorophyll is a measurement of the phytoplankton biomass in the sample. Salinity and water temperature, measured at the time of sample collection, are factors that can influence the growth rate of cyanobacteria and other types of phytoplankton. The MV CYANO color determination (see color-chart above) corresponds to the risk level determined by the local Board of Health agencies based on the concentration of cyanobacteria and other environmental factors.

Station	Pond	Date	Cyanobacteria ($\mu\text{g/L}$)	Cyanobacteria (cells/mL)	Chlorophyll ($\mu\text{g/L}$)	Temp ($^{\circ}\text{C}$)	Temp ($^{\circ}\text{F}$)	Salinity (ppt)	MV CYANO
CHP01	CHP	6/1/22	0.00	0.00	13.68	20.90	69.62	10.78	green
CHP02	CHP	6/1/22	0.00	279.01	13.24	20.50	68.90	10.97	green
CHP03	CHP	6/1/22	0.00	0.00	18.28	20.60	69.08	11.00	green
CHP04	CHP	6/1/22	0.00	0.00	13.35	20.40	68.72	10.95	green
CHP05	CHP	6/1/22	0.00	0.00	13.26	20.20	68.36	10.94	green
CHP06	CHP	6/1/22	0.90	900.00	6.51	18.50	65.30	7.74	yellow
CHP07	CHP	6/1/22	1.93	1929.00	5.41	19.00	66.20	3.59	yellow
CHPUP	CHP	6/1/22	2.12	2123.00	7.08	19.90	67.82	2.62	yellow
CHP01	CHP	6/10/22	3.74	3740.00	8.03	21.00	69.80	10.02	yellow



Station	Pond	Date	Cyanobacteria (ug/L)	Cyanobacteria (cells/mL)	Chlorophyll (ug/L)	Temp (°C)	Temp (°F)	Salinity (ppt)	MV CYANO
CHP02	CHP	6/10/22	4.66	4661.00	7.41	20.50	68.90	10.25	yellow
CHP03	CHP	6/10/22	4.50	4499.00	7.86	20.40	68.72	10.22	yellow
CHP04	CHP	6/10/22	4.07	4068.00	7.49	20.10	68.18	9.91	yellow
CHP05	CHP	6/10/22	4.72	4720.00	8.02	20.30	68.54	10.05	yellow
CHP06	CHP	6/10/22	3.88	3884.00	9.37	20.80	69.44	9.26	yellow
CHP07	CHP	6/10/22	1.49	1487.00	10.43	21.20	70.16	10.05	yellow
CHPUP	CHP	6/10/22	0.91	912.00	9.86	20.60	69.08	2.63	yellow
CHP01	CHP	6/16/22	3.08	3080.00	11.87	23.10	73.58	9.65	yellow
CHP02	CHP	6/16/22	1.59	1584.90	11.36	23.60	74.48	9.76	yellow
CHP03	CHP	6/16/22	1.38	1381.90	12.00	23.60	74.48	9.76	yellow
CHP04	CHP	6/16/22	2.08	2077.70	9.50	23.10	73.58	9.78	yellow
CHP05	CHP	6/16/22	1.80	1805.40	13.36	23.20	73.76	9.53	yellow
CHP06	CHP	6/16/22	1.76	1756.40	11.57	23.80	74.84	9.46	yellow
CHP07	CHP	6/16/22	1.15	1152.60	6.68	24.20	75.56	9.45	yellow
CHP10	CHP	6/16/22	1.06	1061.00	11.53	22.40	72.32	9.47	yellow
CHP12	CHP	6/16/22	1.64	1642.10	10.68	22.60	72.68	9.53	yellow
CHPUP	CHP	6/16/22	1.20	1198.90	7.82	22.30	72.14	1.45	yellow
CHP01	CHP	6/20/22	3.04	3039.45	10.77	19.30	66.74	9.50	yellow
CHP02	CHP	6/20/22	1.09	1085.10	10.33	18.70	65.66	9.60	yellow
CHP03	CHP	6/20/22	1.50	1503.00	10.83	18.90	66.02	9.66	yellow
CHP04	CHP	6/20/22	1.62	1614.20	11.62	19.00	66.20	9.45	yellow
CHP05	CHP	6/20/22	1.64	1636.70	10.21	19.00	66.20	9.57	yellow
CHP06	CHP	6/20/22	0.43	427.50	14.85	19.20	66.56	7.65	green
CHP07	CHP	6/20/22	0.30	300.10	13.99	19.90	67.82	8.71	green
CHP10	CHP	6/20/22	1.12	1121.80	10.06	19.30	66.74	9.55	yellow
CHPUP	CHP	6/20/22	0.00	0.00	14.45	18.60	65.48	2.29	green
CHP01	CHP	6/28/22	3.97	3968.70	11.41	23.00	73.40	8.84	yellow
CHP02	CHP	6/28/22	4.04	4036.60	9.62	23.30	73.94	9.26	yellow
CHP03	CHP	6/28/22	4.19	4188.10	10.50	23.20	73.76	9.20	yellow
CHP04	CHP	6/28/22	3.96	3956.90	9.54	22.90	73.22	9.24	yellow
CHP05	CHP	6/28/22	4.08	4075.00	10.19	23.20	73.76	9.01	yellow
CHP06	CHP	6/28/22	3.05	3051.70	10.39	23.70	74.66	9.25	yellow
CHP07	CHP	6/28/22	0.04	34.40	9.61	23.90	75.02	9.11	green
CHPUP	CHP	6/28/22	0.00	0.00	9.73	23.70	74.66	2.97	green
CHP01	CHP	7/6/22	2.40	2395.70	15.88	22.80	73.04	8.65	yellow
CHP02	CHP	7/6/22	3.38	3376.10	12.95	22.50	72.50	8.90	yellow
CHP03	CHP	7/6/22	3.27	3271.50	11.16	22.50	72.50	8.88	yellow
CHP04	CHP	7/6/22	3.37	3374.40	11.39	22.40	72.32	8.99	yellow
CHP05	CHP	7/6/22	3.33	3335.40	14.31	22.70	72.86	8.88	yellow
CHP06	CHP	7/6/22	2.37	2370.40	8.92	22.40	72.32	7.60	yellow
CHP07	CHP	7/6/22	1.52	1522.00	6.59	22.50	72.50	7.60	yellow
CHPUP	CHP	7/6/22	2.60	2599.20	4.05	24.00	75.20	3.98	yellow



Station	Pond	Date	Cyanobacteria (ug/L)	Cyanobacteria (cells/mL)	Chlorophyll (ug/L)	Temp (°C)	Temp (°F)	Salinity (ppt)	MV CYANO
CHP01	CHP	7/13/22	4.49	4488.00	11.86	25.20	77.36	8.43	yellow
CHP02	CHP	7/13/22	6.15	6146.60	12.40	25.00	77.00	8.79	yellow
CHP03	CHP	7/13/22	6.72	6715.20	13.72	25.00	77.00	8.83	yellow
CHP04	CHP	7/13/22	5.04	5043.10	10.36	24.90	76.82	8.96	yellow
CHP05	CHP	7/13/22	4.71	4714.40	10.58	24.80	76.64	8.79	yellow
CHP06	CHP	7/13/22	5.43	5431.00	14.01	25.00	77.00	8.53	yellow
CHP07	CHP	7/13/22	3.80	3800.10	7.22	25.40	77.72	8.62	yellow
CHPUP	CHP	7/13/22	4.89	4887.30	5.71	25.70	78.26	3.10	yellow
CHP01	CHP	7/20/22	3.86	3859.40	20.10	26.00	78.80	8.31	yellow
CHP02	CHP	7/20/22	4.97	4965.50	26.17	25.60	78.08	8.70	yellow
CHP03	CHP	7/20/22	6.68	6683.20	25.17	25.50	77.90	8.72	yellow
CHP04	CHP	7/20/22	8.84	8839.20	27.14	25.00	77.00	8.66	yellow
CHP05	CHP	7/20/22	4.82	4819.64	25.80	25.60	78.08	8.66	yellow
CHP06	CHP	7/20/22	8.43	8425.20	34.01	25.80	78.44	8.32	yellow
CHP07	CHP	7/20/22	13.78	13780.10	32.08	26.10	78.98	8.04	orange
CHPUP	CHP	7/20/22	19.80	19798.60	22.79	25.50	77.90	3.06	orange
CHN	CHP	7/21/22	1755.84	1755839.50	1853.60	29.90	85.82	2.54	red
CHPUP	CHP	7/21/22	28.64	28637.00	34.82	27.60	81.68	2.83	red
CHP01	CHP	7/26/22	6.88	6876.00	29.18	26.30	79.34	8.36	yellow
CHP02	CHP	7/26/22	9.14	9143.50	34.00	26.30	79.34	8.61	yellow
CHP03	CHP	7/26/22	9.31	9309.00	32.01	26.30	79.34	8.62	yellow
CHP04	CHP	7/26/22	10.01	10009.30	32.29	26.10	78.98	8.67	orange
CHP05	CHP	7/26/22	10.59	10587.40	33.93	26.30	79.34	8.53	orange
CHP06	CHP	7/26/22	12.03	12027.60	37.47	26.60	79.88	8.49	orange
CHP07	CHP	7/26/22	16.99	16990.10	38.26	26.70	80.06	8.53	orange
CHP10	CHP	7/26/22	9.78	9779.20	38.28	26.30	79.34	8.48	yellow
CHPUP	CHP	7/27/22	63.99	63991.27	66.46			2.35	red
CHPUP2	CHP	7/27/22	0.67	664.90	1.94			0.11	red
CHN	CHP	7/27/22	62.71	62707.70	67.23				red
CHP01	CHP	7/29/22	5.11	5109.00	30.42	26.80	80.24	7.97	yellow
CHP02	CHP	7/29/22	5.85	5850.10	33.23	27.10	80.78	8.59	yellow
CHP03	CHP	7/29/22	4.27	4268.90	30.86	27.00	80.60	8.62	yellow
CHP04	CHP	7/29/22	6.61	6606.90	33.90	26.40	79.52	8.63	yellow
CHP05	CHP	7/29/22	6.80	6803.50	36.54	26.60	79.88	8.51	yellow
CHP06	CHP	7/29/22	39.92	39924.10	62.39	26.10	78.98	7.90	orange
CHP07	CHP	7/29/22	89.04	89041.30	94.84	26.30	79.34	8.21	red
CHP10	CHP	7/29/22	7.22	7219.40	32.79	27.20	80.96	8.46	yellow
CHPUP	CHP	7/29/22	83.64	83635.60	85.92	26.60	79.88	2.09	red
CHPUP2	CHP	7/29/22	12.48	12481.50	15.35	23.50	74.30	0.42	orange
CHN	CHP	7/29/22	95.81	95812.80	99.87	27.70	81.86	2.51	red
CHP01	CHP	8/2/22	7.24	7243.70	28.87	25.70	78.26	8.32	yellow
CHP02	CHP	8/2/22	8.52	8523.30	32.69	25.30	77.54	8.47	yellow



Station	Pond	Date	Cyanobacteria (ug/L)	Cyanobacteria (cells/mL)	Chlorophyll (ug/L)	Temp (°C)	Temp (°F)	Salinity (ppt)	MV CYANO
CHP03	CHP	8/2/22	9.98	9978.80	35.42	25.20	77.36	8.51	yellow
CHP04	CHP	8/2/22	13.52	13519.10	40.24	24.60	76.28	8.40	orange
CHP05	CHP	8/2/22	15.88	15875.60	47.54	25.00	77.00	8.32	orange
CHP06	CHP	8/2/22	24.64	24640.50	56.61	25.10	77.18	18.16	orange
CHP07	CHP	8/2/22	76.47	76471.30	98.92	25.30	77.54	7.92	red
CHP10	CHP	8/2/22	7.80	7797.30	31.95	25.40	77.72	8.40	yellow
CHPUP	CHP	8/2/22	132.19	132192.50	137.40	24.60	76.28	2.00	red
CHPUP2	CHP	8/2/22	14.53	14532.60	19.02	19.30	66.74	0.27	orange
CHP06_N	CHP	8/3/22	24.38	24377.17	54.17			7.85	orange
CHP01	CHP	8/4/22	5.53	5532.00	18.93	28.00	82.40	8.46	yellow
CHP02	CHP	8/4/22	6.46	6464.00	20.97	27.70	81.86	8.46	yellow
CHP03	CHP	8/4/22	6.60	6598.60	20.07	27.50	81.50	8.48	yellow
CHP04	CHP	8/4/22	6.79	6789.50	23.88	26.60	79.88	8.25	orange
CHP05	CHP	8/4/22	12.46	12458.10	30.03	27.10	80.78	8.31	orange
CHP06	CHP	8/4/22	27.99	27989.30	50.55	27.00	80.60	8.15	red
CHP07	CHP	8/4/22	65.46	65459.70	84.78	27.30	81.14	8.33	yellow
CHP10	CHP	8/4/22	4.90	4905.20	21.26	27.50	81.50	1.70	red
CHPUP	CHP	8/4/22	136.54	136543.10	136.61	26.40	79.52	0.71	red
CHPUP2	CHP	8/4/22	70.85	70846.60	73.17	21.20	70.16	10.51	yellow
CHP01	CHP	8/8/22	2.83	2828.09	24.24	27.00	80.60	8.40	yellow
CHP02	CHP	8/8/22	3.49	3490.80	26.43	26.80	80.24	8.40	yellow
CHP03	CHP	8/8/22	3.43	3431.40	24.18	26.80	80.24	8.43	yellow
CHP04	CHP	8/8/22	3.52	3526.60	27.11	26.50	79.70	8.35	yellow
CHP05	CHP	8/8/22	3.53	3528.50	26.51	26.80	80.24	6.91	yellow
CHP06	CHP	8/8/22	3.05	3046.11	26.48	26.00	78.80	4.83	orange
CHP07	CHP	8/8/22	1.45	1455.10	16.07	26.00	78.80	8.37	yellow
CHP10	CHP	8/8/22	3.60	3604.30	28.10	27.20	80.96	2.44	orange
CHPUP	CHP	8/8/22	0.78	778.50	9.23	26.70	80.06	2.24	orange
CHPUP2	CHP	8/8/22	0.96	963.70	12.90	26.90	80.42	15.53	yellow
CHP01	CHP	8/15/22	5.23	5228.10	19.70	23.90	75.02	8.30	yellow
CHP02	CHP	8/15/22	4.30	4301.90	13.87	24.20	75.56	8.28	yellow
CHP03	CHP	8/15/22	4.22	4219.50	13.95	24.20	75.56	8.24	yellow
CHP04	CHP	8/15/22	4.21	4207.60	15.86	23.60	74.48	8.21	yellow
CHP05	CHP	8/15/22	4.99	4990.60	17.27	24.20	75.56	7.98	orange
CHP06	CHP	8/15/22	13.26	13262.30	39.18	24.20	75.56	8.01	yellow
CHP07	CHP	8/15/22	9.46	9459.80	69.50	24.60	76.28	8.25	yellow
CHP10	CHP	8/15/22	4.71	4709.20	12.74	23.60	74.48	1.63	orange
CHPUP	CHP	8/15/22	29.66	29655.50	111.49	22.80		0.85	yellow
CHPUP2	CHP	8/15/22	3.16	3160.50	49.39	20.20		11.33	orange
CHP01	CHP	8/22/22	0.31	306.30	43.27	25.80	78.44	8.16	green
CHP02	CHP	8/22/22	0.00	0.00	40.00	25.40	77.72	8.18	green
CHP03	CHP	8/22/22	0.00	0.00	38.45	25.30	77.54	8.18	green



Station	Pond	Date	Cyanobacteria (ug/L)	Cyanobacteria (cells/mL)	Chlorophyll (ug/L)	Temp (°C)	Temp (°F)	Salinity (ppt)	MV CYANO
CHP04	CHP	8/22/22	0.19	195.00	39.60	25.00	77.00	8.10	green
CHP05	CHP	8/22/22	0.00	0.00	41.43	25.30	77.54	5.17	orange
CHP06	CHP	8/22/22	35.19	35189.00	85.93	24.00	75.20	2.29	orange
CHP07	CHP	8/22/22	25.92	25922.00	70.68	23.40	74.12	7.90	green
CHP10	CHP	8/22/22	0.01	12.90	47.68	25.20	77.36	1.28	red
CHPUP	CHP	8/22/22	79.38	79382.20	114.92	24.80	76.64	1.00	red
CHPUP2	CHP	8/22/22	180.89	180887.80	213.05	23.80	74.84		red
CHPUP_W	CHP	8/22/22	1616.83	1616827.80	2406.59				red
CHPUP_N	CHP	8/22/22	1678.27	1678273.10	1766.15			7.81	green
CHP01	CHP	8/25/22	0.00	0.00	70.53	26.20	79.16	8.07	green
CHP02	CHP	8/25/22	0.00	0.00	73.81	25.70	78.26	8.07	green
CHP03	CHP	8/25/22	0.00	0.00	74.01	25.60	78.08	8.07	green
CHP04	CHP	8/25/22	0.00	0.00	71.32	25.10	77.18	7.93	green
CHP05	CHP	8/25/22	0.00	0.00	79.30	25.60	78.08	7.76	green
CHP06	CHP	8/25/22	0.00	0.00	98.36	25.90	78.62	7.76	orange
CHP07	CHP	8/25/22	27.54	27535.00	98.52	26.00	78.80	8.01	green
CHP10	CHP	8/25/22	0.00	0.00	81.59	25.70	78.26	1.25	orange
CHPUP	CHP	8/25/22	45.03	45033.70	112.24	25.40	77.72	0.93	red
CHPUP2	CHP	8/25/22	51.57	51572.10	105.39	25.10	77.18		red
CHPUP_N	CHP	8/25/22	300.97	300972.30	344.72			11.89	orange
CHP06_N	CHP	8/21/22	1552.99		1611.28				red
CHP06_N	CHP	8/21/22	96.82		113.03				red
LB01	CHP	8/21/22	1325.84		1325.84				red
LB02	CHP	8/21/22	10.73		24.91				red
CHPUP_N	CHP	8/21/22	326.23		365.07				red
CHPUP_N	CHP	8/21/22	1372.06		1416.53				red
LVP01	CHP	8/21/22	1733.45		1969.01				red
LVP02	CHP	8/21/22	75.14		75.14			7.73	green
CHP01	CHP	8/29/22	0.00	0.00	81.84	26.00	78.80	7.85	green
CHP02	CHP	8/29/22	0.00	0.00	80.71	25.70	78.26	7.83	green
CHP03	CHP	8/29/22	0.00	0.00	77.34	25.30	77.54	7.88	green
CHP04	CHP	8/29/22	0.00	0.00	74.22	25.20	77.36	7.68	green
CHP05	CHP	8/29/22	0.00	0.00	78.86	25.30	77.54	7.71	yellow
CHP06	CHP	8/29/22	3.20	3199.30	119.69	25.90	78.62	7.58	orange
CHP07	CHP	8/29/22	21.69	21689.00	209.67	26.60	79.88	7.80	yellow
CHP10	CHP	8/29/22	0.00	0.00	71.44	25.10	77.18	0.95	orange
CHPUP	CHP	8/29/22	21.42	21415.40	184.13	24.30	75.74	0.78	orange
CHPUP2	CHP	8/29/22	12.20	12195.90	140.41	20.50	68.90	0.97	red
CHPUP	CHP	9/2/22	69.20	69204.82	220.23	23.50	74.30	0.70	orange
CHPUP2	CHP	9/2/22	41.14	41140.73	149.95	20.50	68.90	0.68	orange
CHPUP_N	CHP	9/2/22	32.48	32475.90	137.85	20.40	68.72	11.58	red



Station	Pond	Date	Cyanobacteria (ug/L)	Cyanobacteria (cells/mL)	Chlorophyll (ug/L)	Temp (°C)	Temp (°F)	Salinity (ppt)	MV CYANO
CHP01	CHP	9/7/22	26.71	26710.50	71.82	22.50	72.50	7.66	orange
CHP02	CHP	9/7/22	27.11	27108.40	72.99	22.10	71.78	7.70	orange
CHP03	CHP	9/7/22	27.03	27023.50	71.52	21.90	71.42	7.72	orange
CHP04	CHP	9/7/22	26.85	26846.50	72.23	21.80	71.24	7.60	orange
CHP05	CHP	9/7/22	28.09	28092.10	78.81	21.90	71.42	2.86	red
CHP06	CHP	9/7/22	68.38	68383.10	106.85	20.10	68.18	1.02	red
CHP07	CHP	9/7/22	65.23	65234.20	103.79	21.00	69.80	7.47	orange
CHP10	CHP	9/7/22	23.71	23709.10	66.58	21.80	71.24	0.80	red
CHPUP	CHP	9/7/22	101.04	101038.00	135.71	20.90	69.62	0.51	orange
CHPUP2	CHP	9/7/22	17.81	17812.70	37.21	18.80	65.84	7.52	orange
CHP01	CHP	9/9/22	25.44	25440.30	88.28	20.60	69.08	7.65	orange
CHP02	CHP	9/9/22	22.80	22799.60	78.87	20.40	68.72	7.64	orange
CHP03	CHP	9/9/22	23.05	23045.90	79.06	20.30	68.54	7.69	orange
CHP04	CHP	9/9/22	21.12	21120.00	77.48	20.10	68.18	7.57	orange
CHP05	CHP	9/9/22	24.05	24053.10	79.61	20.30	68.54	2.00	red
CHP06	CHP	9/9/22	75.24	75237.30	105.12	18.60	65.48	1.28	red
CHP07	CHP	9/9/22	109.93	109929.00	148.45	19.40	66.92	7.48	orange
CHP10	CHP	9/9/22	24.22	24218.10	86.13	20.30	68.54	0.77	red
CHPUP	CHP	9/9/22	104.17	104173.10	137.15	20.10	68.18	0.42	orange
CHPUP2	CHP	9/9/22	29.78	29780.60	50.73	18.00	64.40	11.85	red
CHP01	CHP	9/12/22	15.67	15668.80	67.58	23.40	74.12	7.33	orange
CHP02	CHP	9/12/22	17.23	17227.80	73.13	23.00	73.40	7.48	orange
CHP03	CHP	9/12/22	16.63	16630.40	70.48	22.80	73.04	7.41	orange
CHP04	CHP	9/12/22	17.02	17016.10	70.80	23.00	73.40	7.46	orange
CHP05	CHP	9/12/22	16.84	16837.50	71.01	22.80	73.04	7.46	orange
CHP06	CHP	9/12/22	86.10	86102.30	136.51	22.00	71.60	7.04	red
CHP07	CHP	9/12/22	128.10	128097.50	169.07	22.60	72.68	2.58	red
CHP10	CHP	9/12/22	13.73	13731.60	66.20	23.30	73.94	7.33	orange
CHPUP	CHP	9/12/22	87.78	87777.60	129.29	21.70	71.06	0.77	red
CHPUP2	CHP	9/12/22	71.20	71195.60	113.06	21.30	70.34	0.69	red
CHP05	CHP	9/14/22	23.25	23247.50	79.18	21.70	71.06	5.19	orange
CHP06	CHP	9/14/22	25.87	25872.30	79.87	21.00	69.80	2.15	orange
CHP07	CHP	9/14/22	31.40	31398.30	70.36	21.90	71.42	6.80	orange
CHPUP	CHP	9/14/22	32.22	32221.70	65.39	21.10	69.98	0.56	orange
CHPUP2	CHP	9/14/22	32.45	32450.55	59.46	19.60	67.28	0.32	orange
CHP01	CHP	9/16/22	10.20	10201.10	79.51	20.30	68.54	6.53	orange
CHP02	CHP	9/16/22	10.23	10224.90	75.00	19.90	67.82	6.60	orange
CHP03	CHP	9/16/22	10.39	10388.90	75.20	19.60	67.28	6.61	orange
CHP04	CHP	9/16/22	9.74	9740.20	74.39	19.40	66.92	6.55	yellow
CHP05	CHP	9/16/22	11.69	11690.60	74.87	19.30	66.74	6.50	orange
CHP06	CHP	9/16/22	19.66	19657.00	79.60	19.90	67.82	6.12	orange
CHP07	CHP	9/16/22	39.28	39277.10	84.48	20.70	69.26	3.30	orange



Station	Pond	Date	Cyanobacteria (ug/L)	Cyanobacteria (cells/mL)	Chlorophyll (ug/L)	Temp (°C)	Temp (°F)	Salinity (ppt)	MV CYANO
CHP10	CHP	9/16/22	10.54	10539.50	77.47	19.60	67.28	6.62	orange
CHPUP	CHP	9/16/22	37.25	37254.30	85.24	19.80	67.64	0.59	orange
CHPUP2	CHP	9/16/22	29.86	29863.50	77.75	18.30	64.94	0.51	orange
CHP01	CHP	9/20/22	12.76	12762.50	43.85	21.70	71.06	6.43	orange
CHP02	CHP	9/20/22	13.05	13043.50	42.89	21.50	70.70	6.53	orange
CHP03	CHP	9/20/22	13.92	13915.50	45.68	21.60	70.88	6.52	orange
CHP04	CHP	9/20/22	15.96	15960.70	46.66	21.20	70.16	6.48	orange
CHP05	CHP	9/20/22	14.05	14048.30	44.79	21.60	70.88	6.38	orange
CHP06	CHP	9/20/22	21.16	21159.90	72.10	22.00	71.60	6.23	orange
CHP07	CHP	9/20/22	75.67	75667.10	149.71	22.30	72.14	6.22	red
CHP10	CHP	9/20/22	12.27	12263.50	45.01	21.50	70.70	6.47	orange
CHPUP	CHP	9/20/22	54.74	54740.70	139.00	21.80	71.24	0.87	red
CHPUP2	CHP	9/20/22	47.07	47066.00	114.00	21.30	70.34	0.76	orange
CHP01	CHP	9/27/22	3.73	3727.80	34.71	19.00	66.20	6.22	yellow
CHP02	CHP	9/27/22	4.25	4246.00	30.37	18.50	65.30	6.28	yellow
CHP03	CHP	9/27/22	4.31	4312.70	28.96	18.30	64.94	6.26	yellow
CHP04	CHP	9/27/22	4.08	4081.00	31.01	18.20	64.76	6.28	yellow
CHP05	CHP	9/27/22	4.96	4957.10	30.41	18.20	64.76	6.12	yellow
CHP06	CHP	9/27/22	5.00	5002.20	36.05	18.60	65.48	6.07	yellow
CHP07	CHP	9/27/22	68.93	68928.60	132.37	18.70	65.66	6.10	red
CHP10	CHP	9/27/22	4.85	4851.20	32.61	18.20	64.76	6.26	yellow
CHPUP	CHP	9/27/22	39.50	39500.00	114.94	18.70	65.66	1.04	orange
CHPUP2	CHP	9/27/22	34.76	34756.80	104.58	18.60	65.48	0.90	orange
CHP01	CHP	10/6/22	2.63	2636.30	35.86	14.60	58.28	5.56	yellow
CHP02	CHP	10/6/22	2.76	2762.80	31.81	14.60	58.28	5.65	yellow
CHP03	CHP	10/6/22	2.53	2530.90	36.96	14.70	58.46	5.62	yellow
CHP04	CHP	10/6/22	2.85	2844.20	31.27	14.80	58.64	5.65	yellow
CHP05	CHP	10/6/22	2.69	2691.00	34.47	14.70	58.46	5.60	yellow
CHP06	CHP	10/6/22	12.70	12702.30	76.39	15.20	59.36	1.60	orange
CHP07	CHP	10/6/22	17.37	17373.10	87.70	15.20	59.36	0.89	orange
CHP10	CHP	10/6/22	2.61	2606.20	30.73	14.60	58.28	5.55	yellow
CHPUP	CHP	10/6/22	16.67	16675.10	90.07	15.00	59.00	0.68	orange
CHPUP2	CHP	10/6/22	9.48	9477.80	66.59	15.20	59.36	0.48	yellow
CHP01	CHP	10/12/22	0.13	132.70	38.11	15.80	60.44	5.33	green
CHP02	CHP	10/12/22	0.43	432.10	34.35	15.60	60.08	5.42	green
CHP03	CHP	10/12/22	0.55	545.40	35.28	15.70	60.26	5.44	yellow
CHP04	CHP	10/12/22	0.95	948.50	34.36	15.50	59.90	5.34	yellow
CHP05	CHP	10/12/22	1.52	1515.80	32.89	15.40	59.72	5.26	yellow
CHP06	CHP	10/12/22	1.26	1259.10	38.02	15.70	60.26	5.40	yellow
CHP07	CHP	10/12/22	15.44	15439.80	47.37	15.70	60.26	5.14	orange
CHP10	CHP	10/12/22	0.63	629.10	39.46	15.00	59.00	5.37	yellow
CHPUP	CHP	10/12/22	15.46	15463.00	55.58	15.70	60.26	0.91	orange



Station	Pond	Date	Cyanobacteria (ug/L)	Cyanobacteria (cells/mL)	Chlorophyll (ug/L)	Temp (°C)	Temp (°F)	Salinity (ppt)	MV CYANO
CHPUP2	CHP	10/12/22	7.97	7970.50	44.41	14.60	58.28	0.63	yellow
CHP01	CHP	10/25/22	0.00	0.00	35.26	15.50	59.90	23.13	green
CHP02	CHP	10/25/22	0.00	0.00	33.44	16.00	60.80	25.97	green
CHP03	CHP	10/25/22	0.00	0.00	36.96	16.10	60.98	25.68	green
CHP04	CHP	10/25/22	0.00	0.00	49.23	16.00	60.80	14.25	green
CHP05	CHP	10/25/22	0.23	226.60	25.52	15.80	60.44	26.92	green
CHP06	CHP	10/25/22	1.12	1117.80	21.40	16.80	62.24	1.27	yellow
CHP07	CHP	10/25/22	1.02	1016.20	24.94	16.80	62.24	0.79	yellow
CHP10	CHP	10/25/22	0.52	520.50	17.66	15.60	60.08	18.38	yellow
CHPUP	CHP	10/25/22	0.27	271.00	23.39	16.30	61.34	0.41	green
CHP01	CHP	10/19/22	0.38	379.20	41.64	16.80	62.24	4.69	green
CHP02	CHP	10/19/22	0.87	869.30	38.11	16.20	61.16	4.81	yellow
CHP03	CHP	10/19/22	1.32	1321.40	41.15	16.40	61.52	4.84	yellow
CHP04	CHP	10/19/22	1.37	1370.40	39.76	15.90	60.62	4.62	yellow
CHP05	CHP	10/19/22	1.12	1117.80	38.81	16.50	61.70	4.77	yellow
CHP06	CHP	10/19/22	1.68	1683.70	46.78	16.40	61.52	4.13	yellow
CHP07	CHP	10/19/22	2.95	2950.40	57.00	16.00	60.80	2.58	yellow
CHP10	CHP	10/19/22	0.49	487.30	39.46	16.50	61.70	4.80	green
CHPUP	CHP	10/19/22	1.55	1554.70	63.33	16.10	60.98	0.75	yellow
CHPUP2	CHP	10/19/22	2.58	2575.10	60.03	16.20	61.16	0.67	yellow
CHP02	CHP	11/4/22	0.00	0.00	19.31	14.70	58.46	17.04	green
CHP06	CHP	11/4/22	0.22	214.50	20.27	14.50	58.10	26.00	green
CHP07	CHP	11/4/22	0.38	378.90	29.16	13.40	56.12	0.48	green
CHPUP	CHP	11/4/22	0.17	169.20	34.23	13.30	55.94	0.36	green

